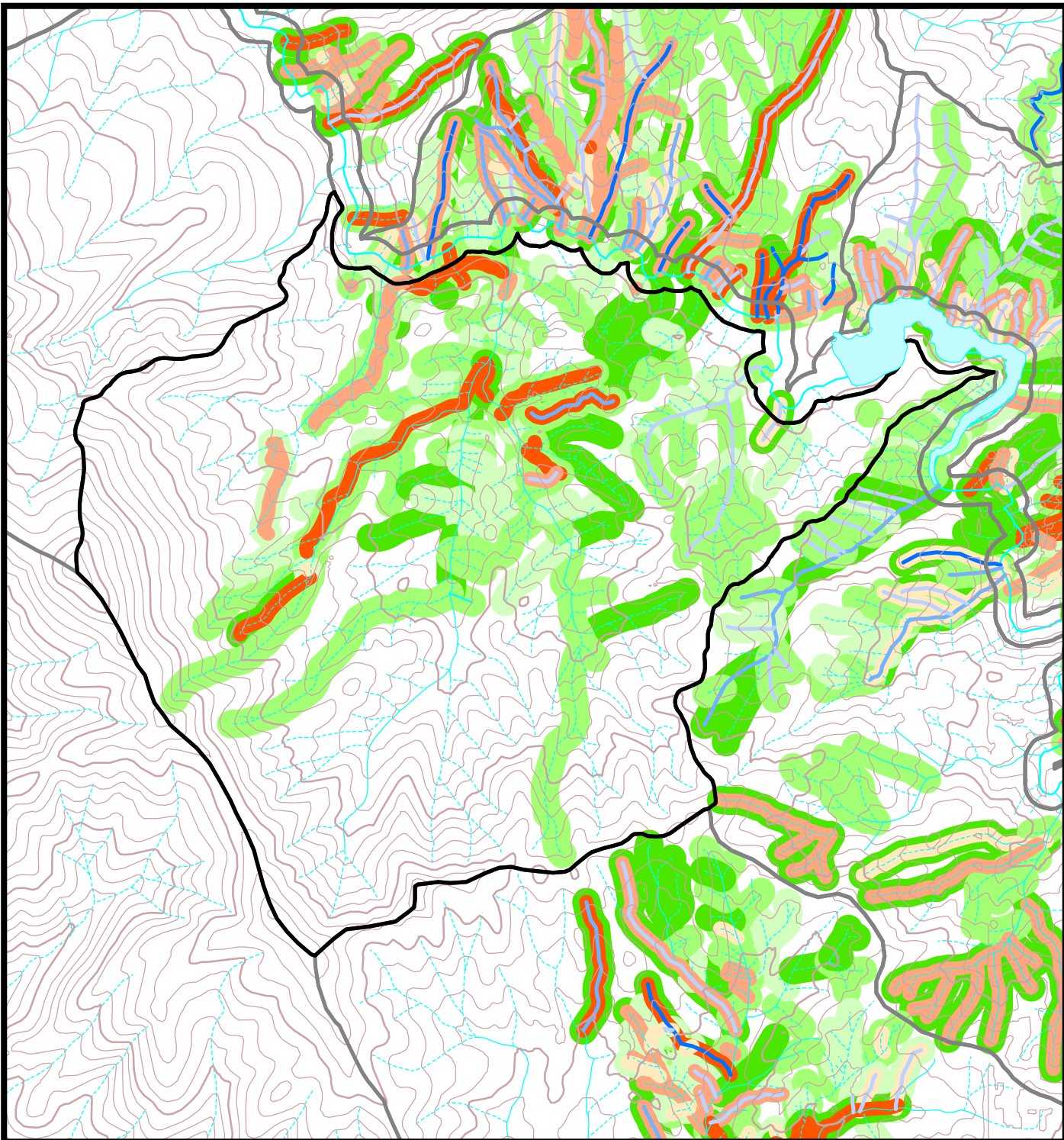





Appendix E-1 Grass Valley Creek Subwatershed 09 Planting Densities






 **Watershed Boundaries**




Grass & Forbs

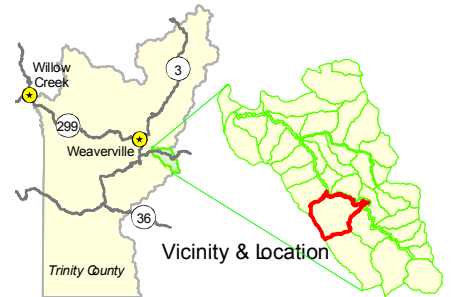
-  High (≥ 1000)
-  Medium (500-1000)
-  Low (1-500)

Shrubs

-  High (≥ 500)
-  Medium (100-500)
-  Low (1-100)

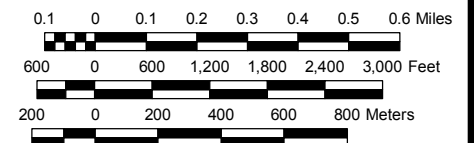
Conifers & Hardwoods

-  High (≥ 2000)
-  Medium (500-2000)
-  Low (1-500)

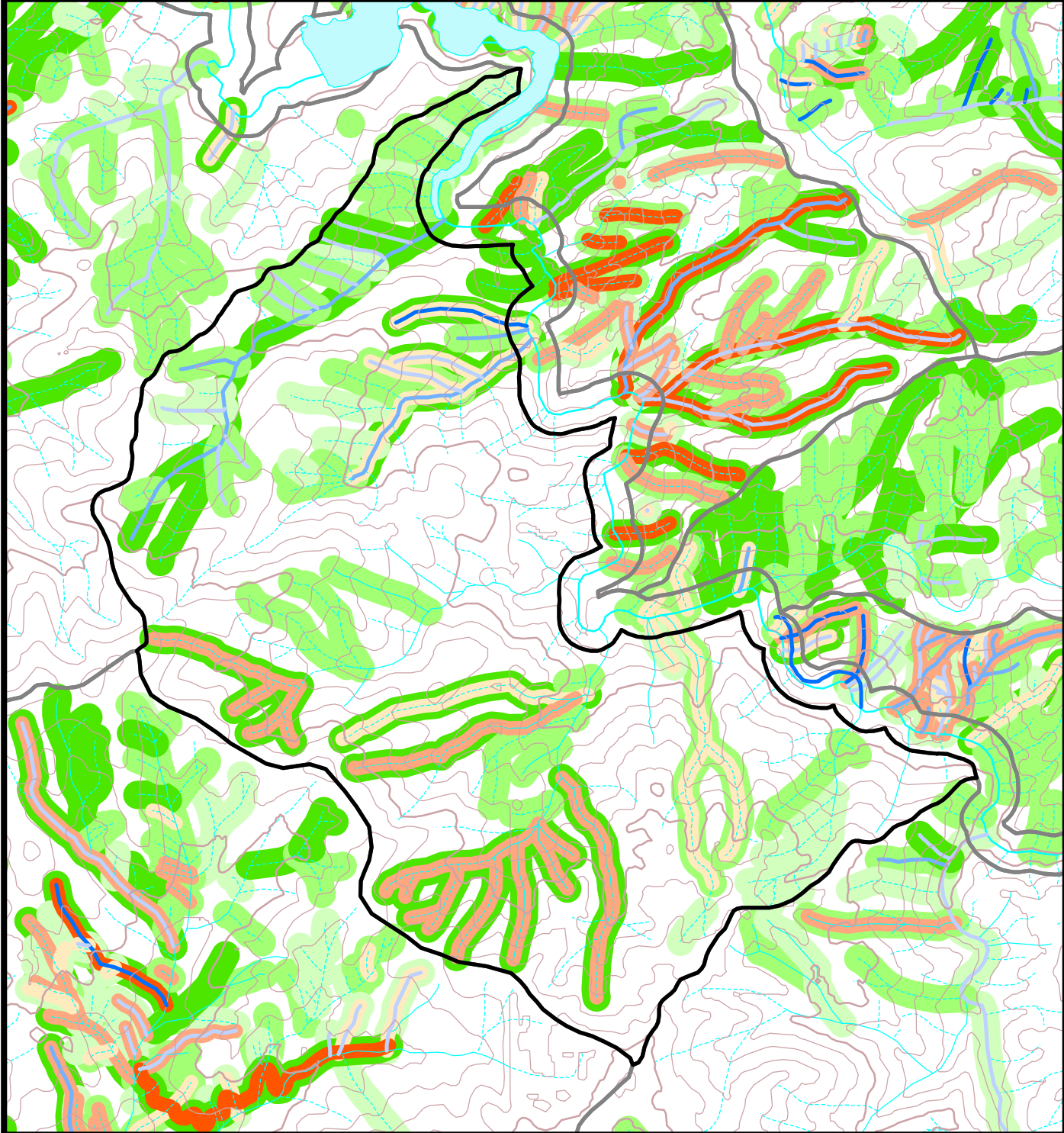




Prepared By
**Trinity County Resource
Conservation District**
May 26, 2005

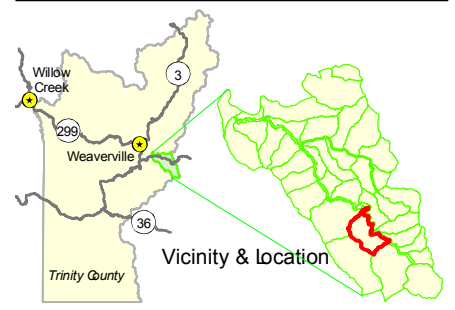
Scale: 1 = 24,000



Appendix E-2 Grass Valley Creek Subwatershed 10 Planting Densities



-  **Watershed Boundaries**
- Grass & Forbs**
 -  High (≥ 1000)
 -  Medium (500-1000)
 -  Low (1-500)
- Shrubs**
 -  High (≥ 500)
 -  Medium (100-500)
 -  Low (1-100)
- Conifers & Hardwoods**
 -  High (≥ 2000)
 -  Medium (500-2000)
 -  Low (1-500)



Prepared By
**Trinity County Resource
Conservation District**
May 26, 2005
GVC-10_Planting-Density_11x8-5.mxd

Scale: 1 = 18,000

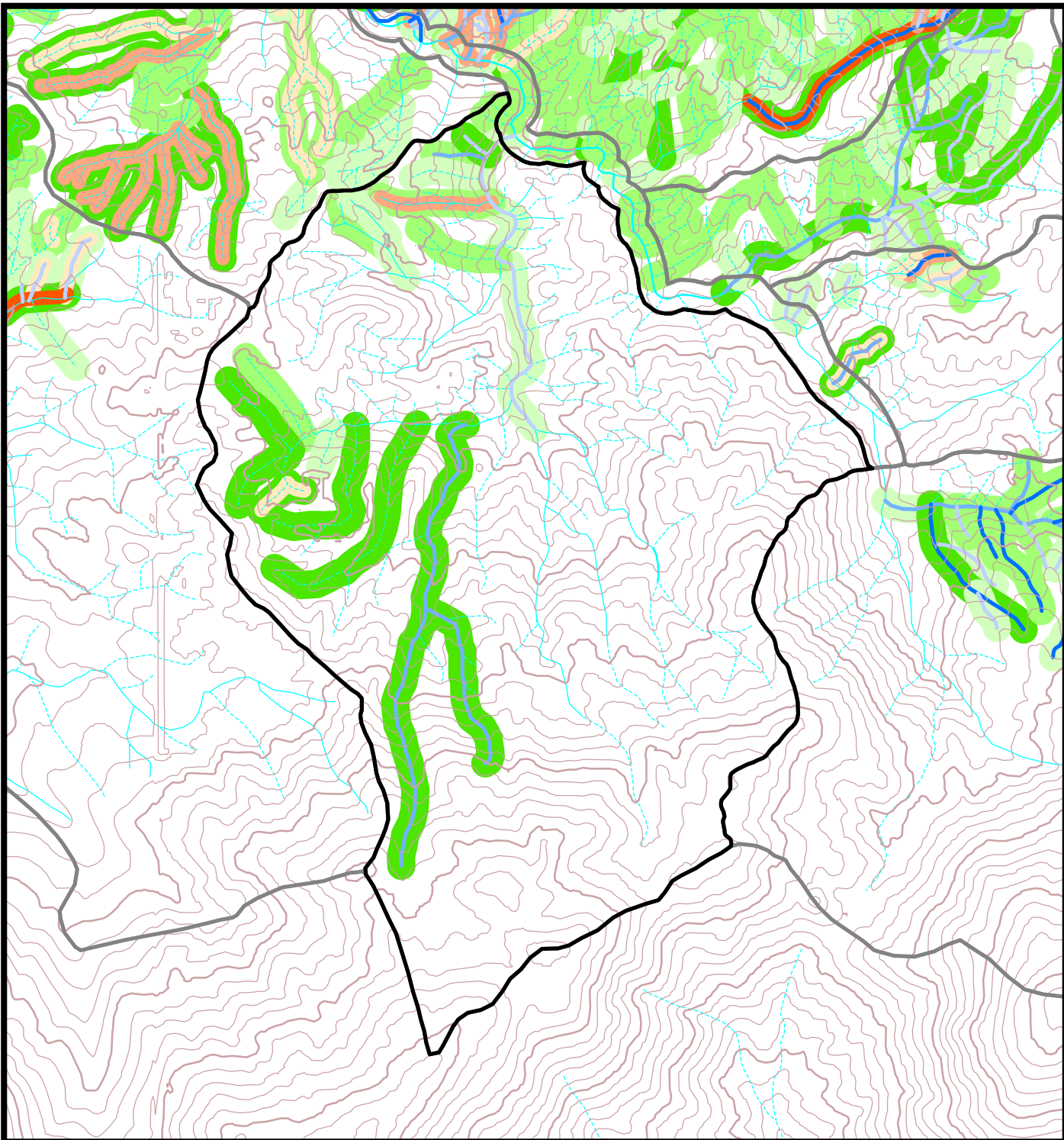
0.1 0 0.1 0.2 0.3 0.4 Miles

600 0 600 1,200 1,800 Feet

200 0 200 400 600 Meters

K.D.S.

Appendix E-3 Grass Valley Creek Subwatershed 11 Planting Densities



Watershed Boundaries

Grass & Forbs

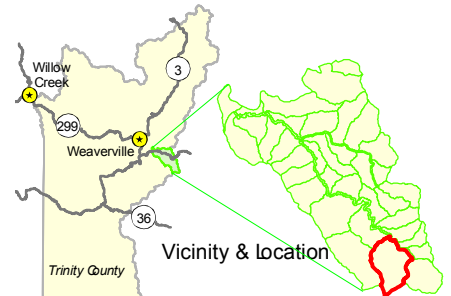
- High (≥ 1000)
- Medium (500-1000)
- Low (1-500)

Shrubs

- High (≥ 500)
- Medium (100-500)
- Low (1-100)

Conifers & Hardwoods

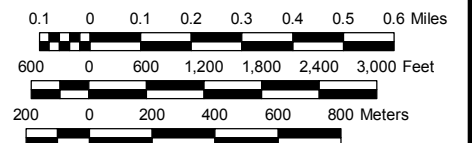
- High (≥ 2000)
- Medium (500-2000)
- Low (1-500)



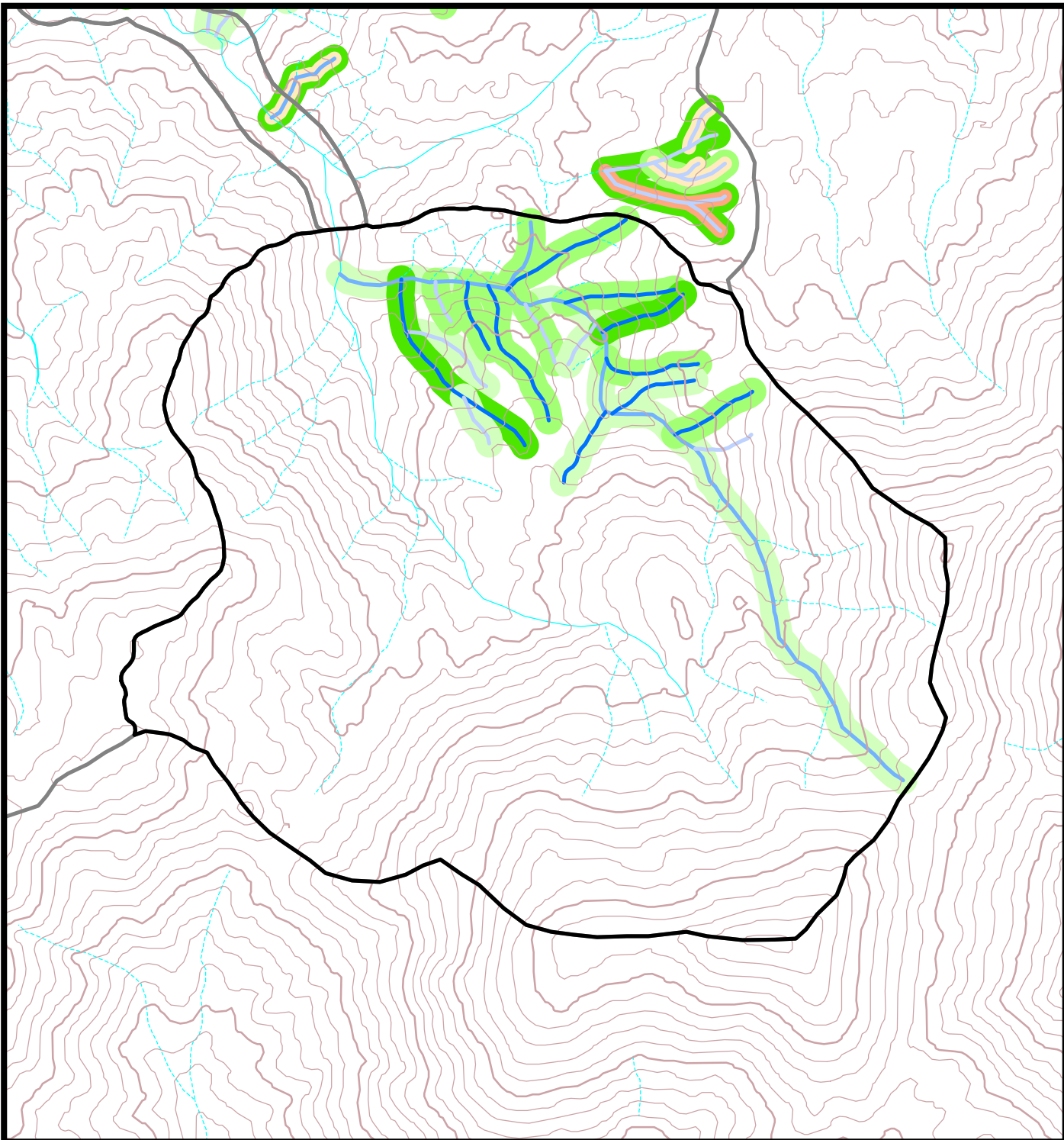
Prepared By
**Trinity County Resource
Conservation District**
May 26, 2005

Scale: 1 = 24,000

GVC-11_Planting-Density_11x8-5.mxd






Appendix E-4 Grass Valley Creek Subwatershed 12 Planting Densities






 **Watershed Boundaries**




Grass & Forbs

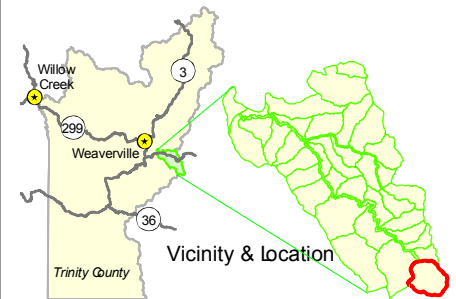
-  High (≥ 1000)
-  Medium (500-1000)
-  Low (1-500)

Shrubs

-  High (≥ 500)
-  Medium (100-500)
-  Low (1-100)

Conifers & Hardwoods

-  High (≥ 2000)
-  Medium (500-2000)
-  Low (1-500)



Prepared By
**Trinity County Resource
Conservation District**
May 26, 2005

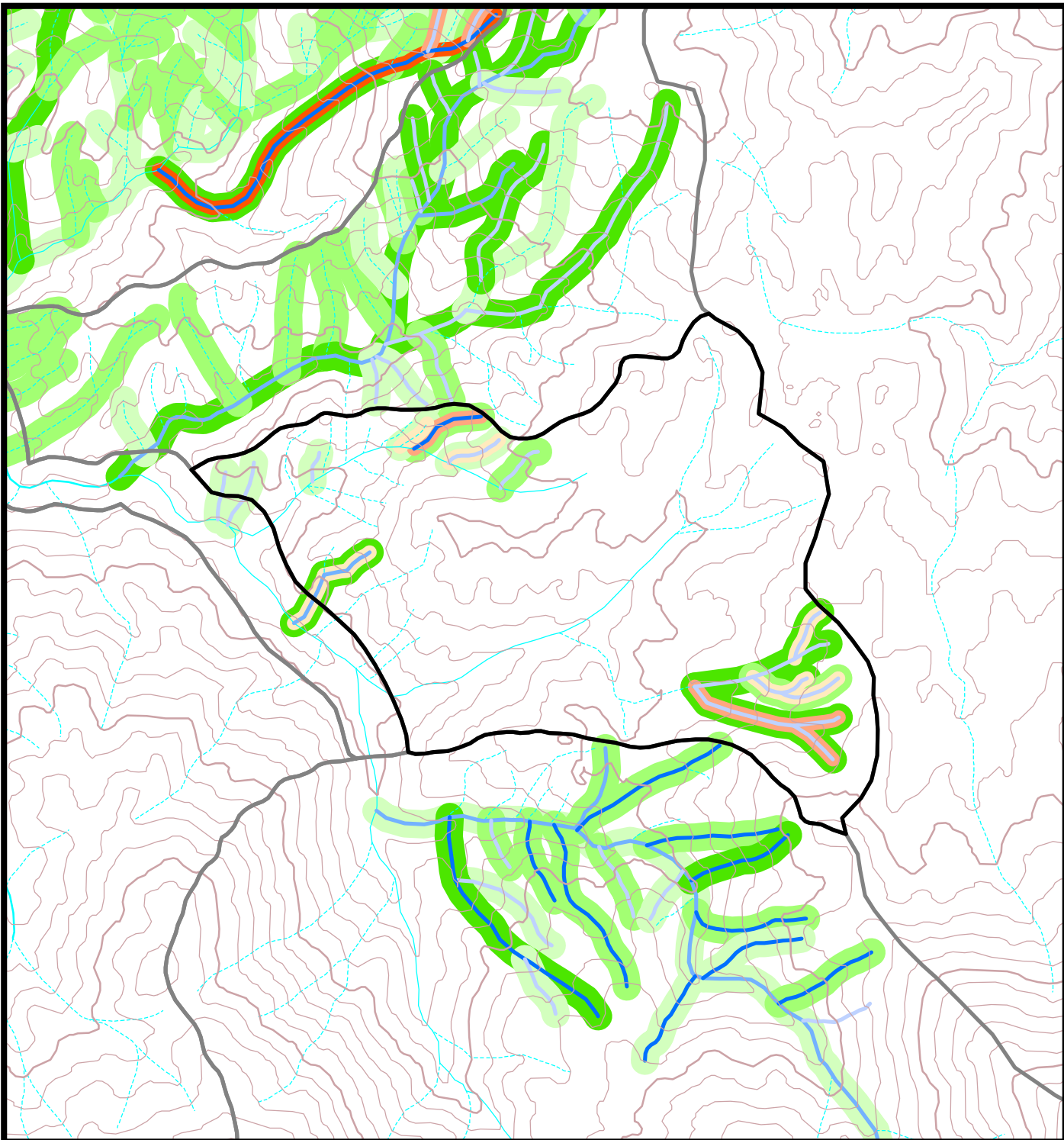
Scale: 1 = 18,000


0.1 0 0.1 0.2 0.3 0.4 Miles

600 0 600 1,200 1,800 Feet




200 0 200 400 600 Meters

Appendix E-5 Grass Valley Creek Subwatershed 13 Planting Densities






 **Watershed Boundaries**




Grass & Forbs

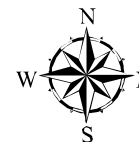
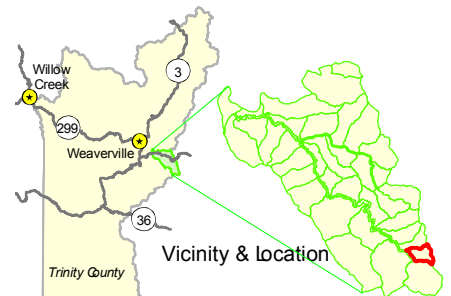
-  High (≥ 1000)
-  Medium (500-1000)
-  Low (1-500)

Shrubs

-  High (≥ 500)
-  Medium (100-500)
-  Low (1-100)

Conifers & Hardwoods

-  High (≥ 2000)
-  Medium (500-2000)
-  Low (1-500)



Prepared By
**Trinity County Resource
Conservation District**
May 26, 2005

Scale: 1 = 15,000

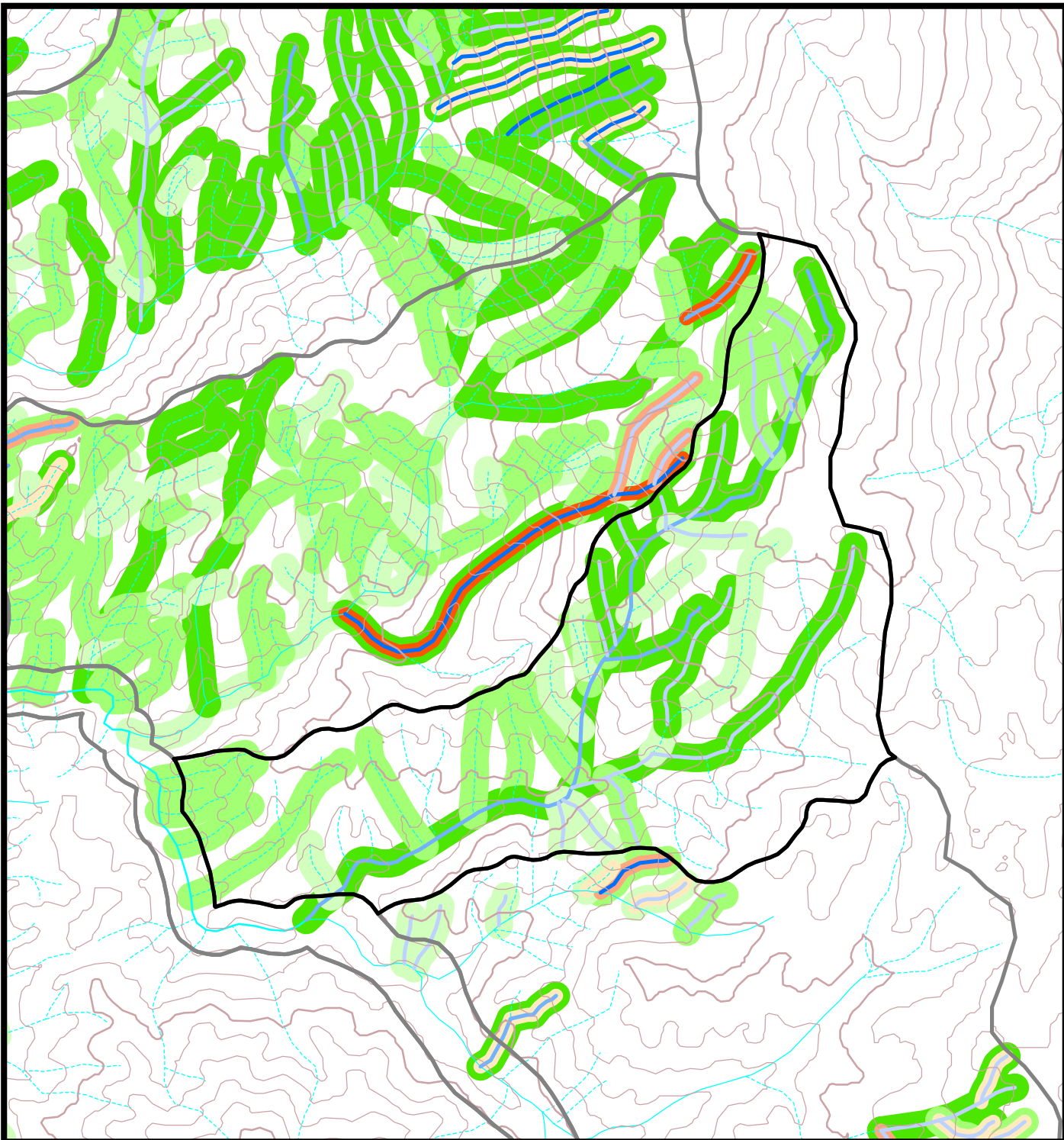
GVC-13_Planting-Density_11x8-5.mxd

0.05 0 0.05 0.1 0.15 0.2 0.25 0.3 0.35 Miles

300 0 300 600 900 1,200 1,500 1,800 Feet

100 0 100 200 300 400 500 Meters

Appendix E-6 Grass Valley Creek Subwatershed 14 Planting Densities

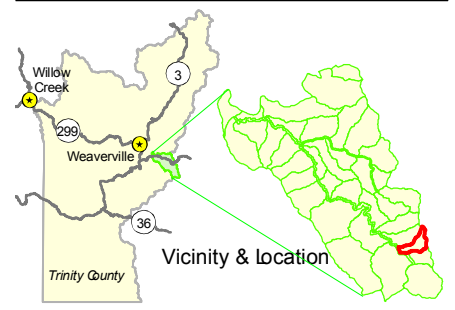


-  **Watershed Boundaries**

- Grass & Forbs**
 -  High (≥ 1000)
 -  Medium (500-1000)
 -  Low (1-500)

- Shrubs**
 -  High (≥ 500)
 -  Medium (100-500)
 -  Low (1-100)

- Conifers & Hardwoods**
 -  High (≥ 2000)
 -  Medium (500-2000)
 -  Low (1-500)



Prepared By
**Trinity County Resource
Conservation District**
May 26, 2005
GVC-14_Planting-Density_11x8-5.mxd

Scale: 1 = 15,000

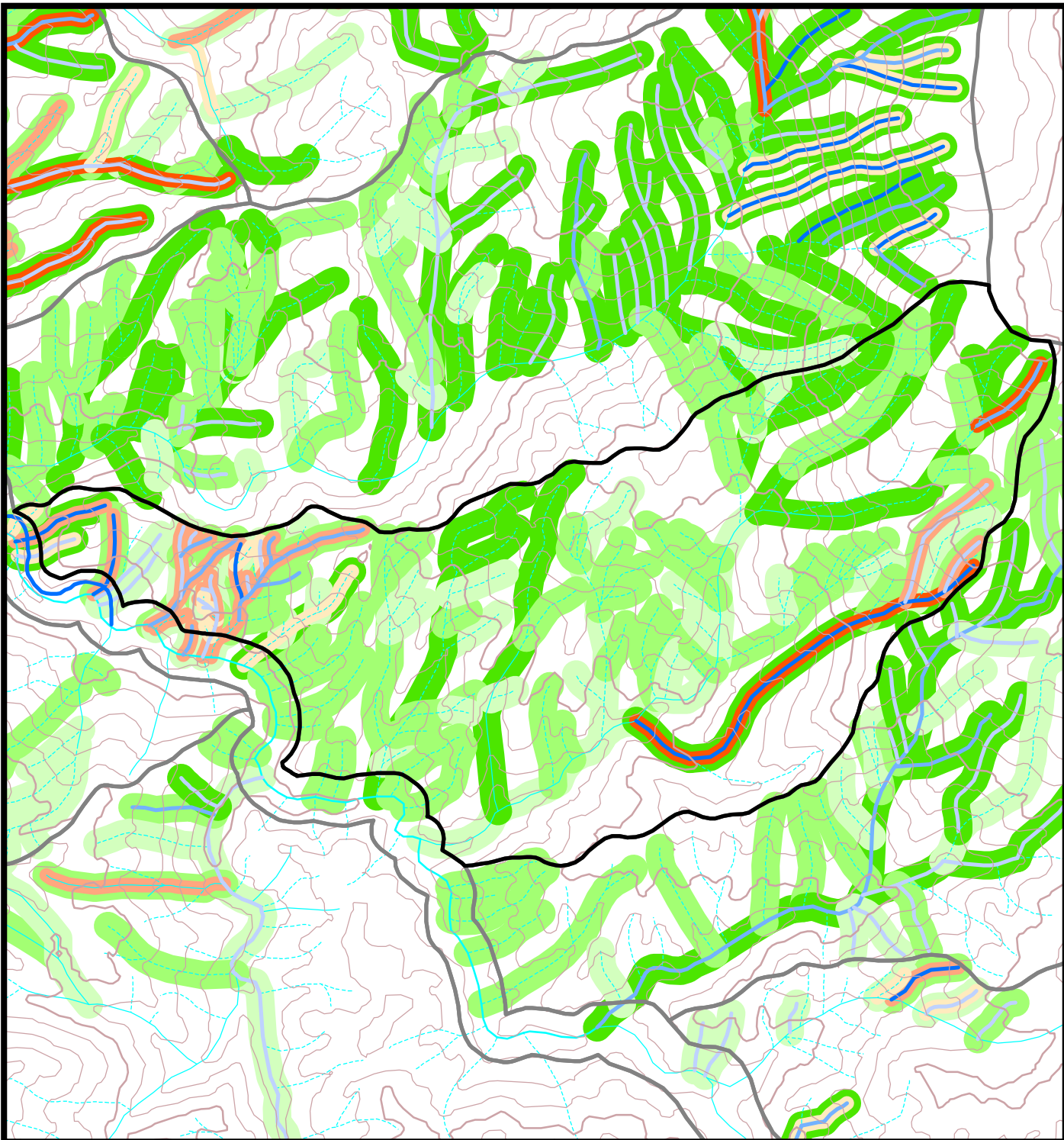
0.05 0 0.05 0.1 0.15 0.2 0.25 0.3 0.35 Miles

300 0 300 600 900 1,200 1,500 1,800 Feet

100 0 100 200 300 400 500 Meters




K.D.S.

Appendix E-7 Grass Valley Creek Subwatershed 15 Planting Densities






 **Watershed Boundaries**




Grass & Forbs

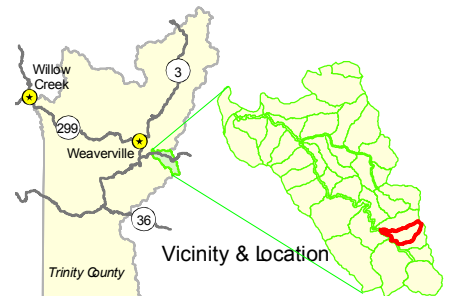
-  High (≥ 1000)
-  Medium (500-1000)
-  Low (1-500)

Shrubs

-  High (≥ 500)
-  Medium (100-500)
-  Low (1-100)

Conifers & Hardwoods

-  High (≥ 2000)
-  Medium (500-2000)
-  Low (1-500)



Prepared By
**Trinity County Resource
Conservation District**
May 26, 2005

Scale: 1 = 15,000

GVC-15_Planting-Density_11x8-5.mxd

0.05 0 0.05 0.1 0.15 0.2 0.25 0.3 0.35 Miles

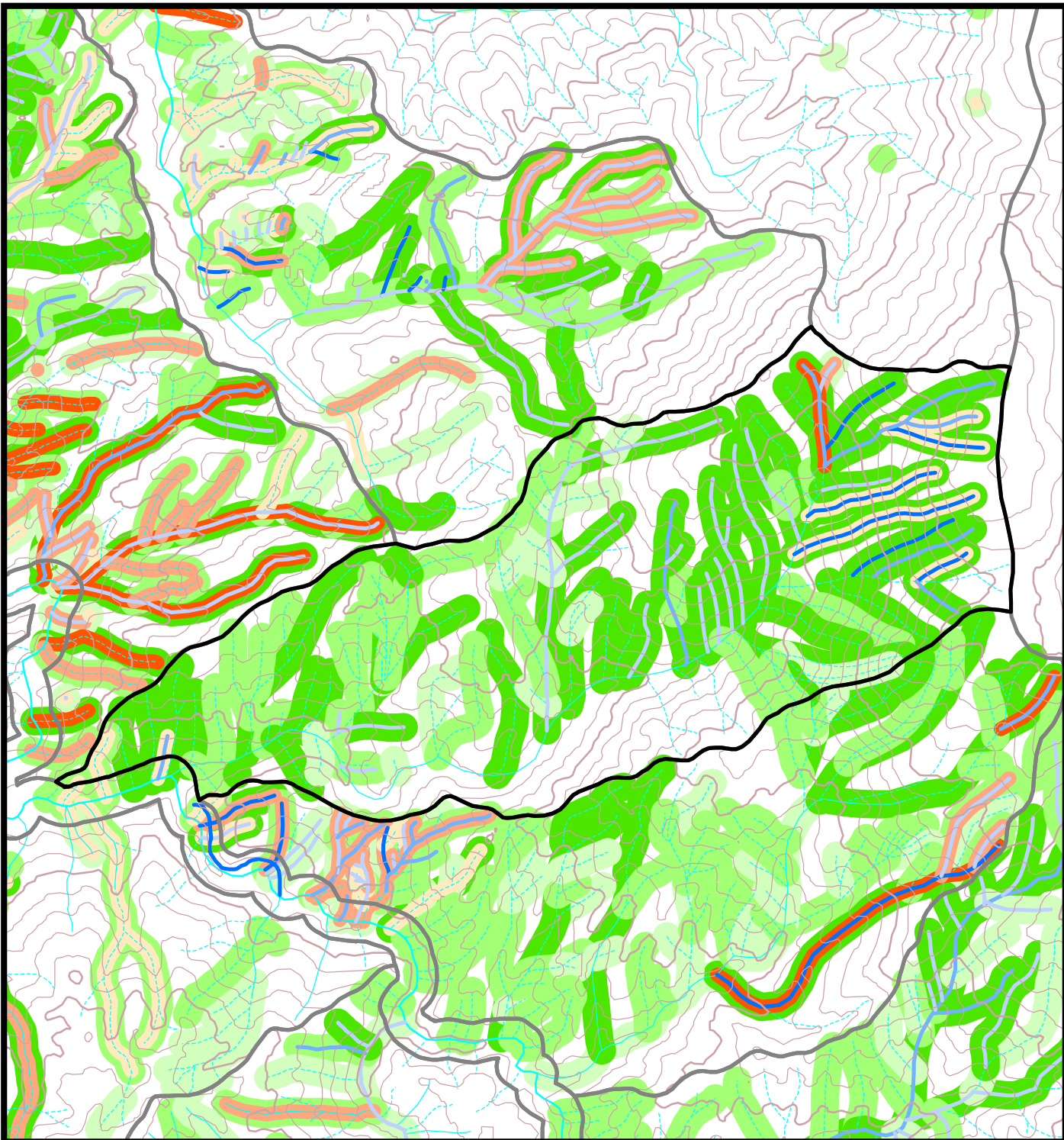
300 0 300 600 900 1,200 1,500 1,800 Feet

100 0 100 200 300 400 500 Meters

Appendix E-8

Grass Valley Creek Subwatershed 16

Planting Densities



Watershed Boundaries

Grass & Forbs

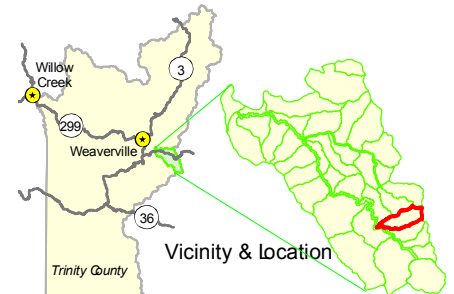
High (≥ 1000)
 Medium (500-1000)
 Low (1-500)

Shrubs

High (≥ 500)
 Medium (100-500)
 Low (1-100)

Conifers & Hardwoods

High (≥ 2000)
 Medium (500-2000)
 Low (1-500)



Prepared By
Trinity County Resource Conservation District
 May 26, 2005
 GVC-16_Planting-Density_11x8-5.mxd

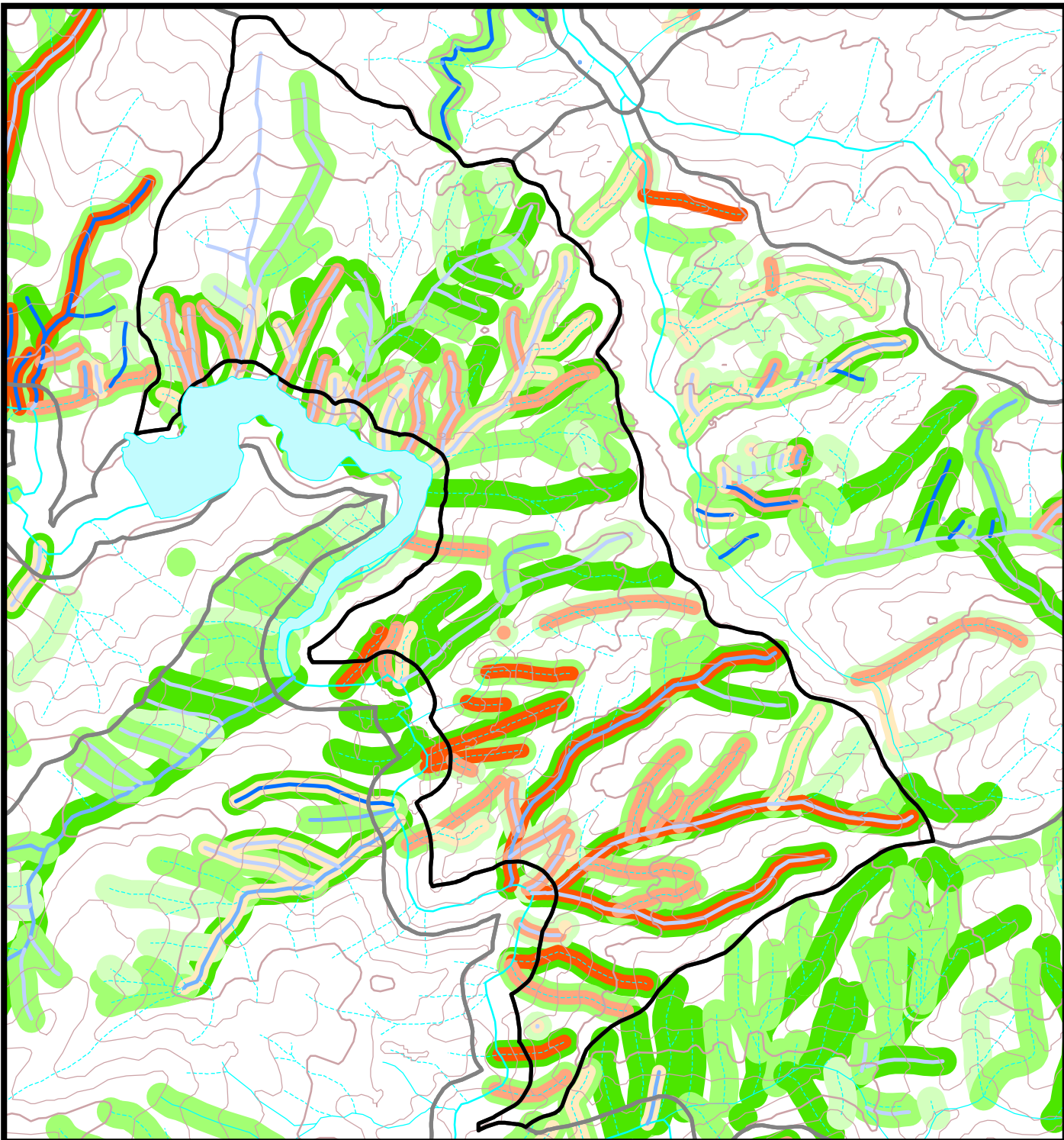
Scale: 1 = 18,000


0.1 0 0.1 0.2 0.3 0.4 Miles

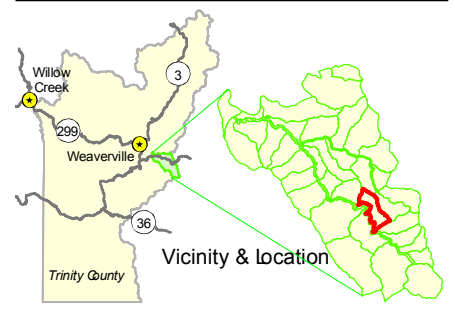
600 0 600 1,200 1,800 Feet

200 0 200 400 600 Meters

Appendix E-9 Grass Valley Creek Subwatershed 17 Planting Densities



-  **Watershed Boundaries**
- Grass & Forbs**
 -  High (≥ 1000)
 -  Medium (500-1000)
 -  Low (1-500)
- Shrubs**
 -  High (≥ 500)
 -  Medium (100-500)
 -  Low (1-100)
- Conifers & Hardwoods**
 -  High (≥ 2000)
 -  Medium (500-2000)
 -  Low (1-500)



Prepared By
**Trinity County Resource
Conservation District**
May 26, 2005
GVC-17_Planting-Density_11x8-5.mxd

Scale: 1 = 15,000


0.05 0 0.05 0.1 0.15 0.2 0.25 0.3 0.35 Miles

300 0 300 600 900 1,200 1,500 1,800 Feet




100 0 100 200 300 400 500 Meters

K.D.S.




Appendix E-10 Grass Valley Creek Subwatershed 18 Planting Densities

 **Watershed Boundaries**

Grass & Forbs

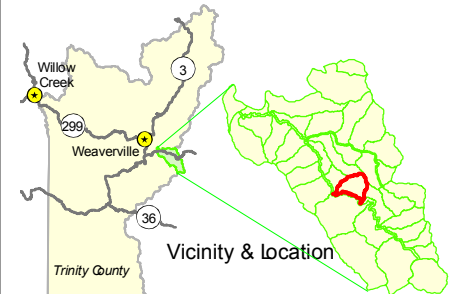
 High (≥ 1000)
 Medium (500-1000)
 Low (1-500)

Shrubs

 High (≥ 500)
 Medium (100-500)
 Low (1-100)

Conifers & Hardwoods

 High (≥ 2000)
 Medium (500-2000)
 Low (1-500)



Prepared By
**Trinity County Resource
 Conservation District**
 May 26, 2005

Scale: 1 = 15,000

0.05 0 0.05 0.1 0.15 0.2 0.25 0.3 0.35 Miles


300 0 300 600 900 1,200 1,500 1,800 Feet

100 0 100 200 300 400 500 Meters




Appendix E-11

Grass Valley Creek Subwatershed 19




Planting Densities

 Watershed Boundaries


Grass & Forbs

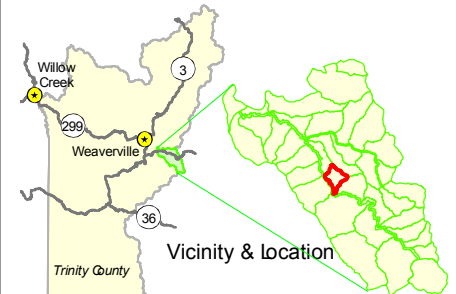
 High (≥ 1000)
 Medium (500-1000)
 Low (1-500)

Shrubs

 High (≥ 500)
 Medium (100-500)
 Low (1-100)

Conifers & Hardwoods

 High (≥ 2000)
 Medium (500-2000)
 Low (1-500)



Prepared By
**Trinity County Resource
 Conservation District**
 May 26, 2005

Scale: 1 = 15,000

0.05 0 0.05 0.1 0.15 0.2 0.25 0.3 0.35 Miles

300 0 300 600 900 1,200 1,500 1,800 Feet

100 0 100 200 300 400 500 Meters