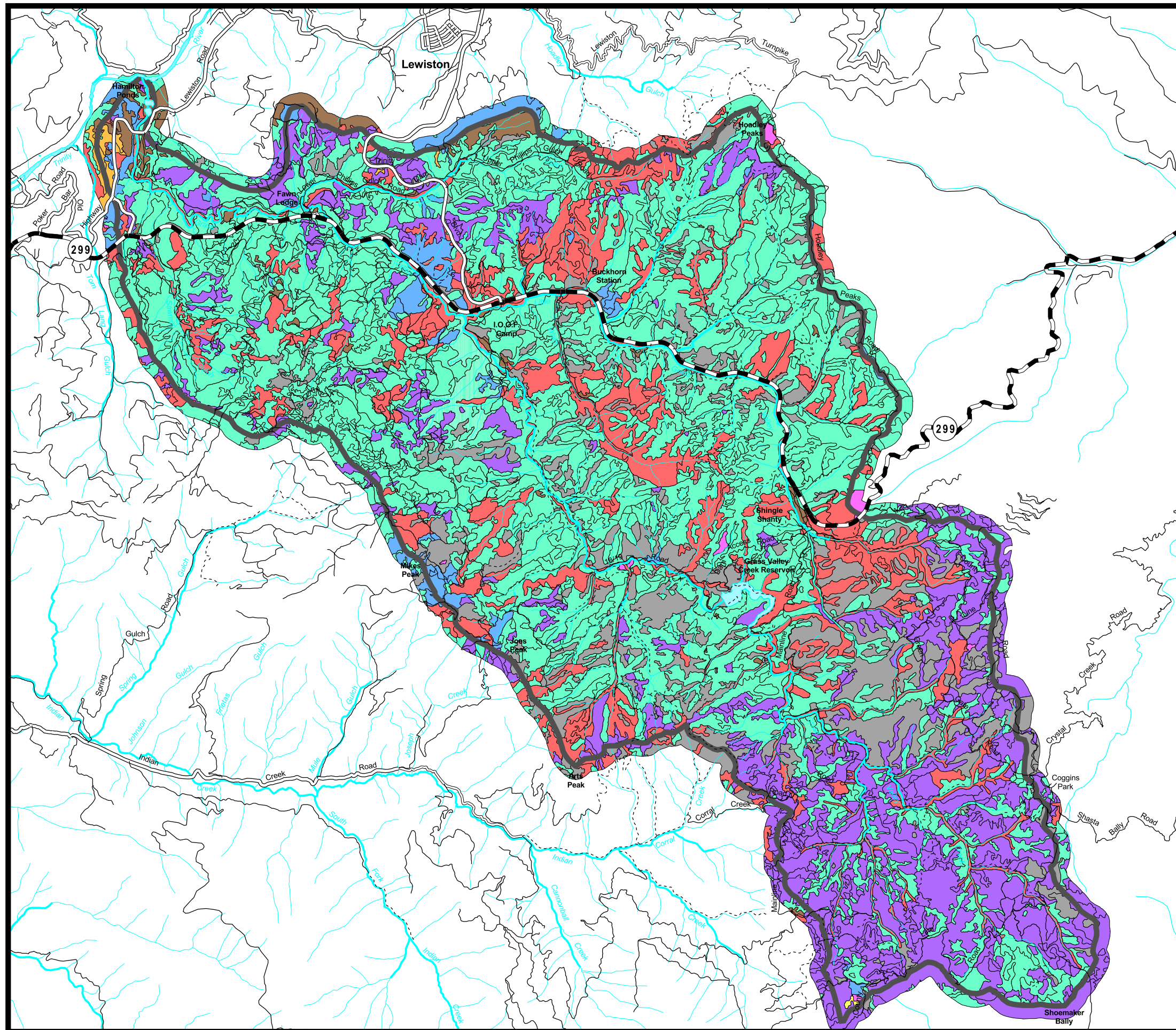







Grass Valley Creek Primary Fuel Model



Fuel Models

-  1 Short Grass
-  2 Timber / Grass
-  5 Short Grass
-  6 Medium Brush
-  8 Short Needle Conifer / Hardwood
-  9 Long Needle Conifer / Hardwood
-  10 Mixed Conifer / Heavy Litter
-  11 Light Slash
-  99 Barren / Rock

Roads

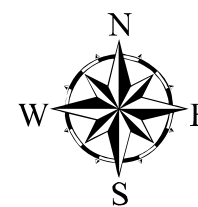
-  Highway
-  Paved
-  Rocked
-  Native
-  Undrivable

Streams

-  Perennial
-  Intermittent

Water Bodies

-  Water Bodies
-  Watershed Boundry



Presented By
Kenneth Baldwin, RPF 1855

Prepared By
**Trinity County Resource
Conservation District**

December 31, 2002

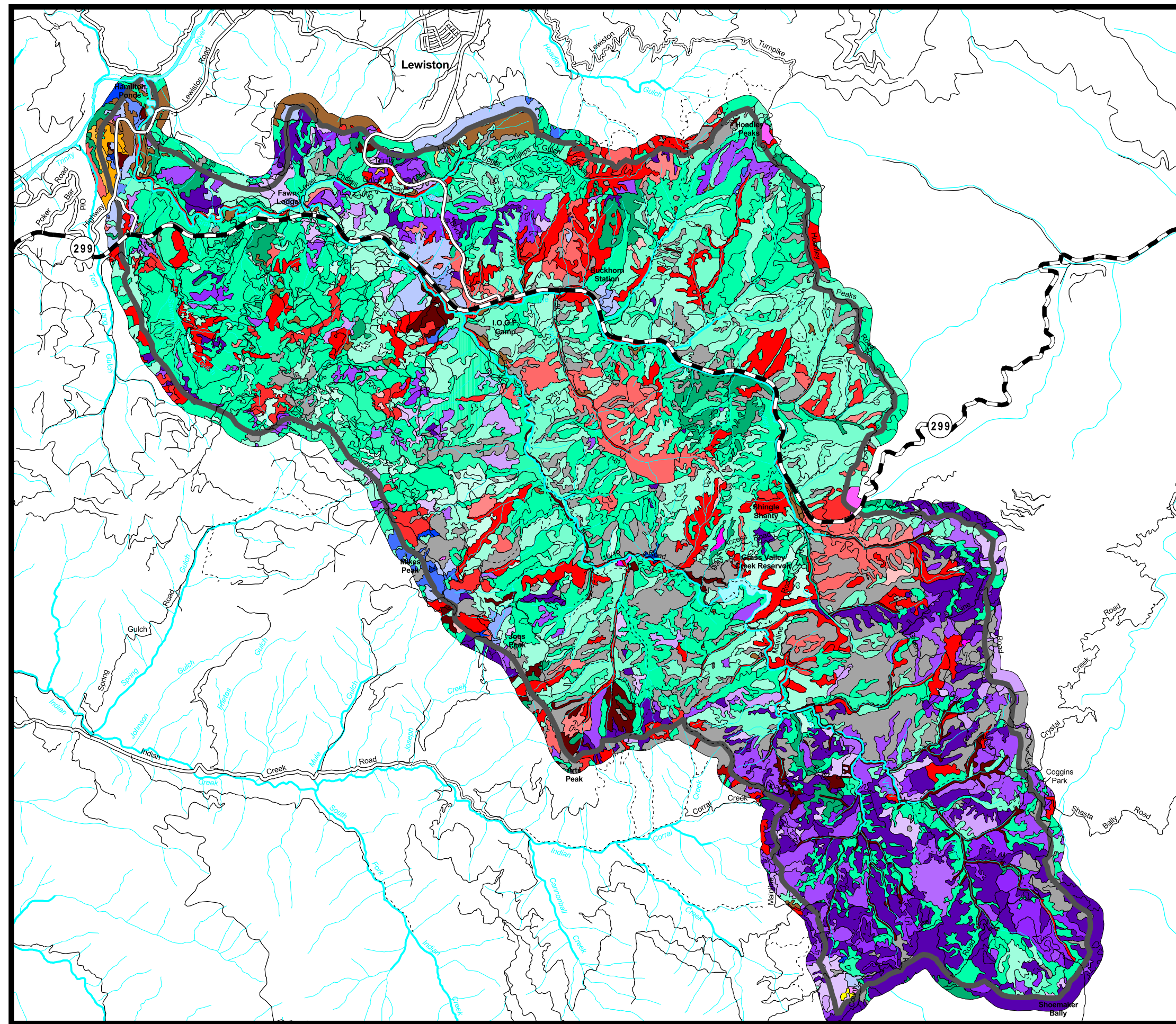
Scale: 1 = 60,000

0 0.5 1 1.5 2 2.5 Miles

0 2500 5000 7500 10000 12500 Feet

0 0.5 1 1.5 2 2.5 3 3.5 4 Kilometers

Grass Valley Creek Primary Fuel Model



Fuel Models with Indices

1-0-0	6-1-1	9-0-0
2-0-0	6-2-1	9-0-1
2-0-1	6-2-2	9-0-2
2-0-2	8-0-0	9-1-0
2-1-0	8-0-1	9-1-1
2-1-1	8-0-2	9-1-2
2-1-2	8-1-0	9-2-1
5-0-0	8-1-1	9-2-2
5-0-1	8-1-2	10-0-2
5-0-2	8-2-1	10-1-1
5-1-0	8-2-2	10-1-2
5-1-1		10-2-2
5-1-2		11-1-0
5-2-0		99-0-0
5-2-1		
5-2-2		

Roads

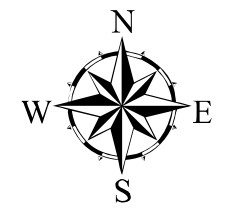
- Highway
- Paved
- Rocked
- Native
- Undrivable

Streams

- Perennial
- Intermittent

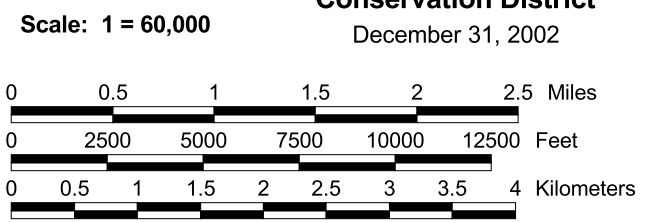
Water Bodies

- Water Bodies
- Watershed Boundry

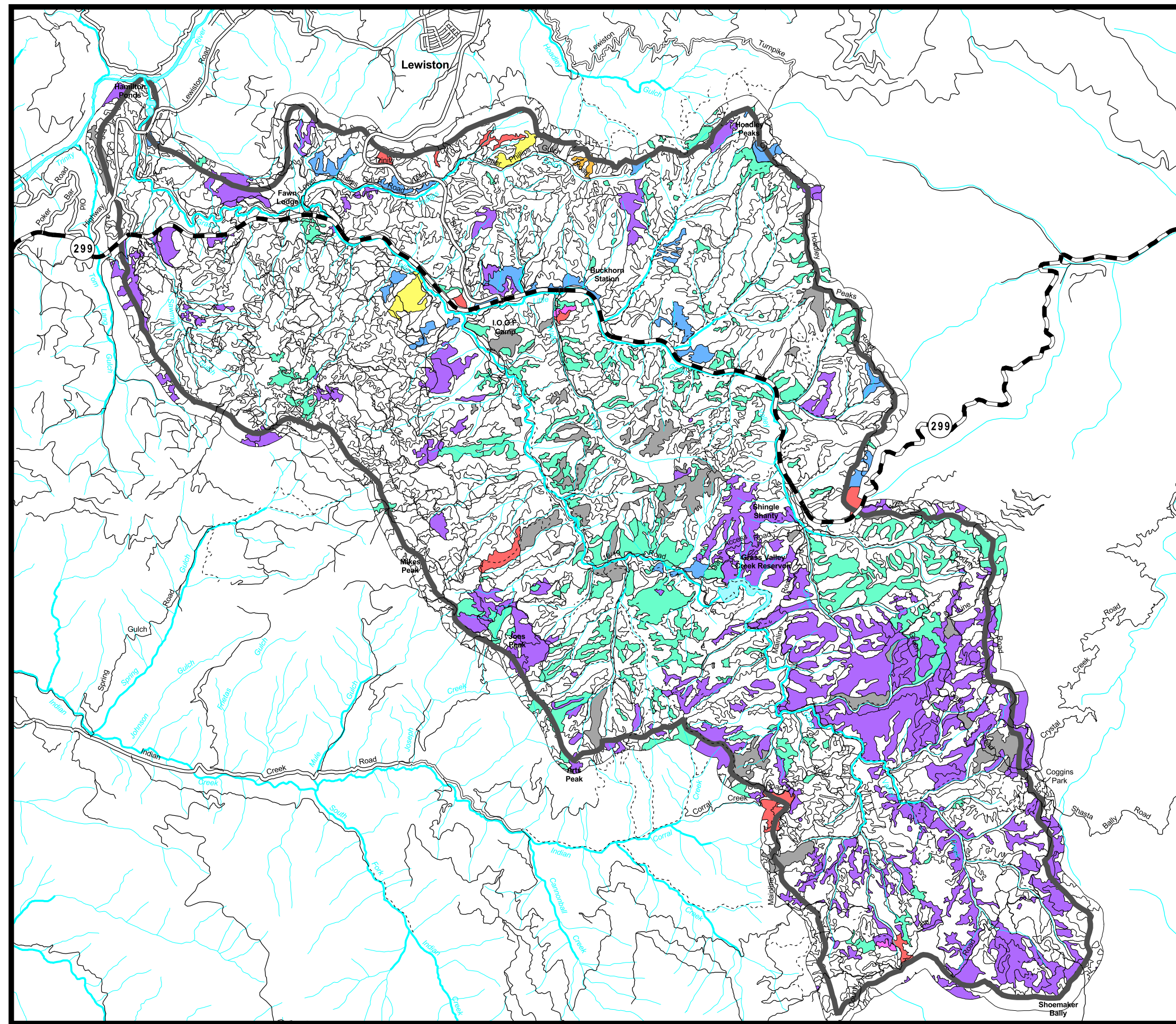


Presented By
Kenneth Baldwin, RPF 1855

Prepared By
**Trinity County Resource
Conservation District**
December 31, 2002



Grass Valley Creek Secondary Fuel Model



Fuel Models

- 1 Short Grass
- 2 Timber / Grass
- 5 Short Grass
- 6 Medium Brush
- 8 Short Needle Conifer / Hardwood
- 9 Long Needle Conifer / Hardwood
- 10 Mixed Conifer / Heavy Litter
- 11 Light Slash
- 99 Barren / Rock
- none

Roads

- Highway
- Paved
- Rocked
- Native
- Undrivable

Streams

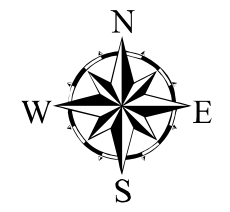
- Perennial
- Intermittent

Water Bodies

- Water Bodies

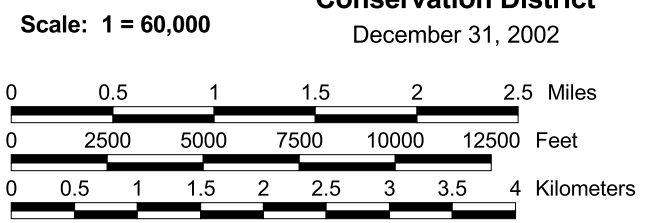
Watershed Boundry

- Watershed Boundry

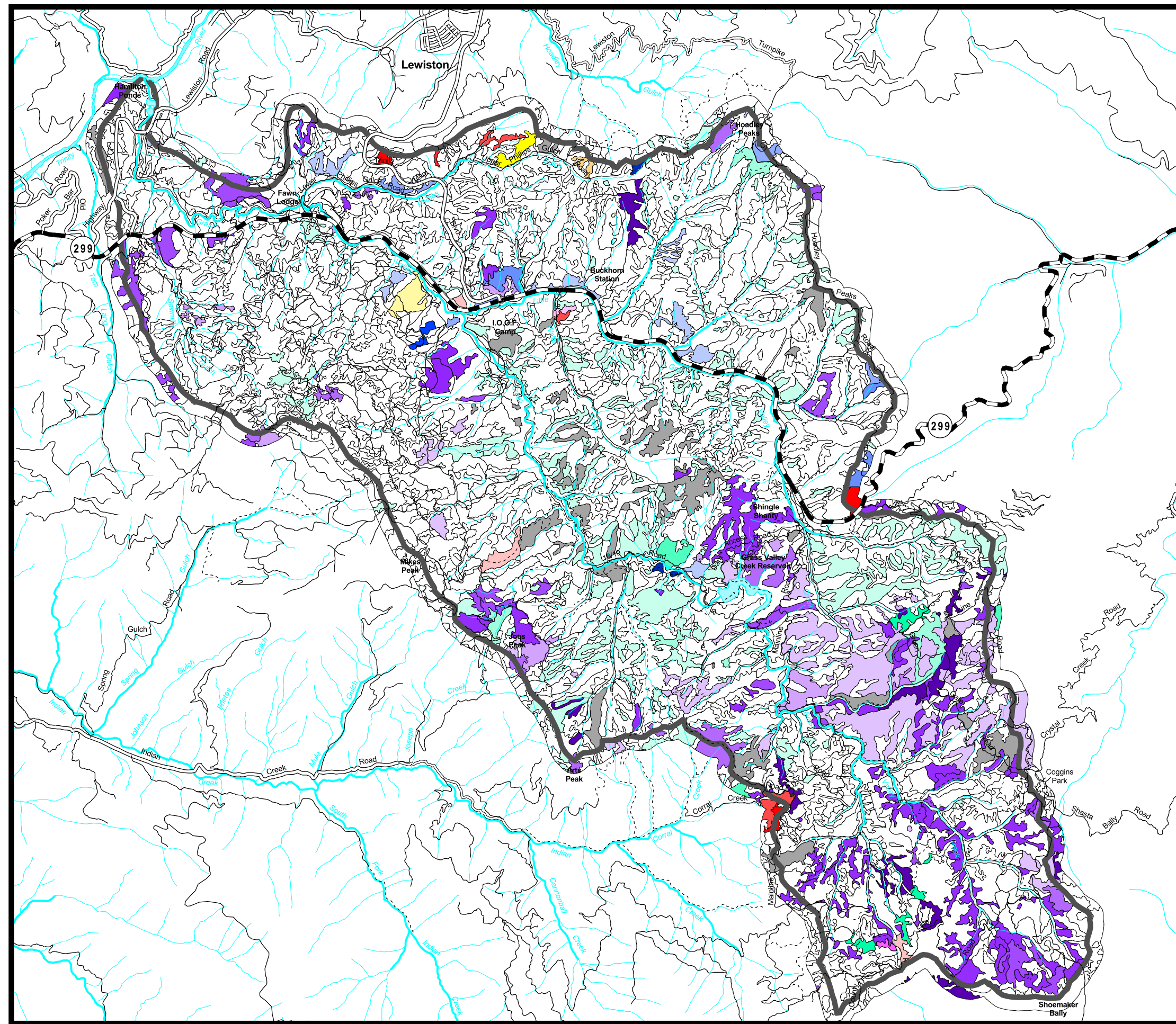


Presented By
Kenneth Baldwin, RPF 1855

Prepared By
**Trinity County Resource
Conservation District**
December 31, 2002



Grass Valley Creek Secondary Fuel Model



Fuel Models with Indices

1-0-0	6-1-0	9-0-0
2-0-0	6-2-1	9-0-1
2-0-1	6-2-2	9-0-2
2-0-2	8-0-0	9-1-0
2-1-0	8-0-1	9-1-1
2-1-1	8-0-2	9-1-2
2-1-2	8-1-0	9-2-1
5-0-0	8-1-1	9-2-2
5-0-1	8-1-2	10-0-2
5-0-2	8-2-1	10-1-1
5-1-0	8-2-2	10-1-2
5-1-1		10-2-2
5-1-2		11-0-0
5-2-0		11-1-1
5-2-1		99-0-0
5-2-2		none

Roads

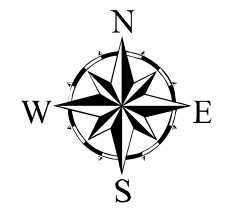
- Highway
- Paved
- Rocked
- Native
- Undrivable

Streams

- Perennial
- Intermittent

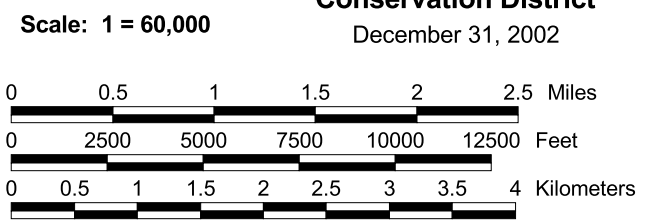
Water Bodies

- Water Bodies
- Watershed Boundry

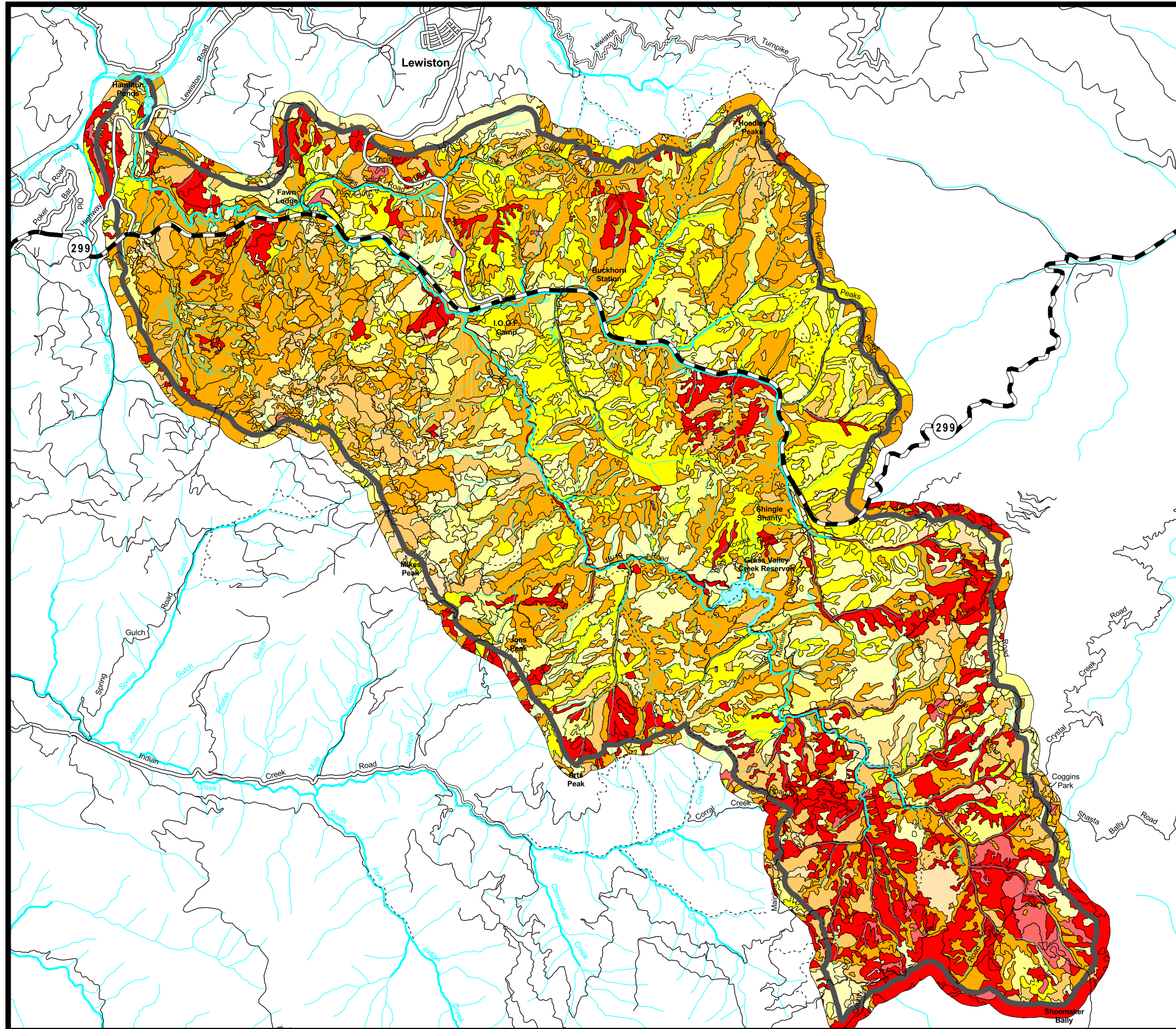


Presented By
Kenneth Baldwin, RPF 1855

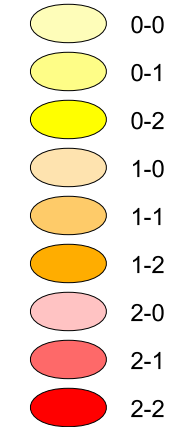
Prepared By
**Trinity County Resource
Conservation District**
December 31, 2002



Grass Valley Creek Primary Fuel Indices



Ladder Fuel-Crown Fuel



Ladder Fuel Indices

- 0 Fuel ladders are not present.
- 1 Fuel ladders are present but spatially limited, with open areas where fire may not carry. Includes <51-75% of the total area.
- 2 Fuel ladders are widespread throughout the vegetation, with no break in continuity from ground to crown. Includes 75% or more of the total area.

Crown Fuel Indices

- 0 No horizontal continuity. Includes <50% of the total area.
- 1 Horizontal continuity present but spatially limited, with open areas where crown fire may not carry. Includes <51-75% of the total area.
- 2 Horizontal continuity is widespread, with no break in crowns. Would carry a crown fire. Includes 75% or more of the total area.

Roads

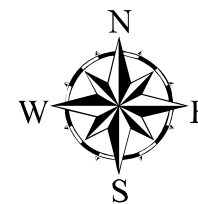
- Highway
- Paved
- Rocked
- Native
- Undrivable

Streams

- Perennial
- Intermittent

Water Bodies

Watershed Boundry



Presented By
Kenneth Baldwin, RPF 1855

Prepared By
**Trinity County Resource
Conservation District**

December 31, 2002

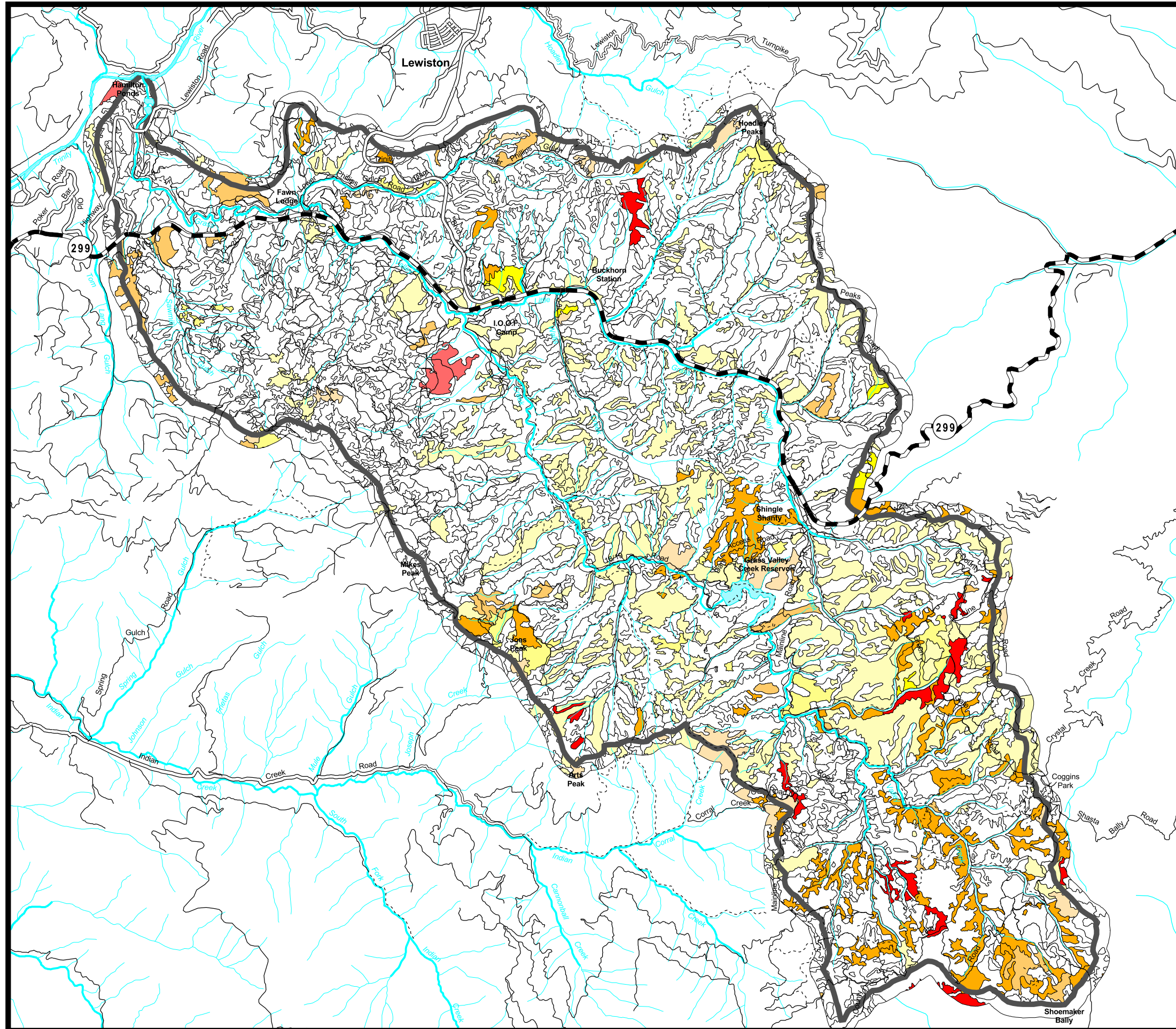
Scale: 1 = 60,000

0 0.5 1 1.5 2 2.5 Miles

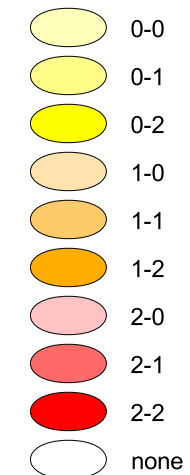
0 2500 5000 7500 10000 12500 Feet

0 0.5 1 1.5 2 2.5 3 3.5 4 Kilometers

Grass Valley Creek Secondary Fuel Indices



Ladder Fuel-Crown Fuel



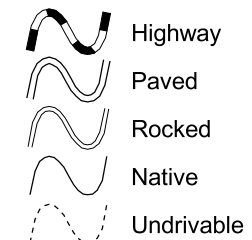
Ladder Fuel Indices

- 0 Fuel ladders are not present.
- 1 Fuel ladders are present but spatially limited, with open areas where fire may not carry. Includes <51-75% of the total area.
- 2 Fuel ladders are widespread throughout the vegetation, with no break in continuity from ground to crown. Includes 75% or more of the total area.

Crown Fuel Indices

- 0 No horizontal continuity. Includes <50% of the total area.
- 1 Horizontal continuity present but spatially limited, with open areas where crown fire may not carry. Includes <51-75% of the total area.
- 2 Horizontal continuity is widespread, with no break in crowns. Would carry a crown fire. Includes 75% or more of the total area.

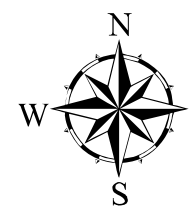
Roads



Streams



Water Bodies



Presented By
Kenneth Baldwin, RPF 1855

Prepared By
**Trinity County Resource
Conservation District**

December 31, 2002

Scale: 1 = 60,000

0 0.5 1 1.5 2 2.5 Miles

0 2500 5000 7500 10000 12500 Feet

0 0.5 1 1.5 2 2.5 3 3.5 4 Kilometers